




Legend

-  Ann Arbor Township
-  Village of Barton Hills
-  Annexation Policy Statement Boundary

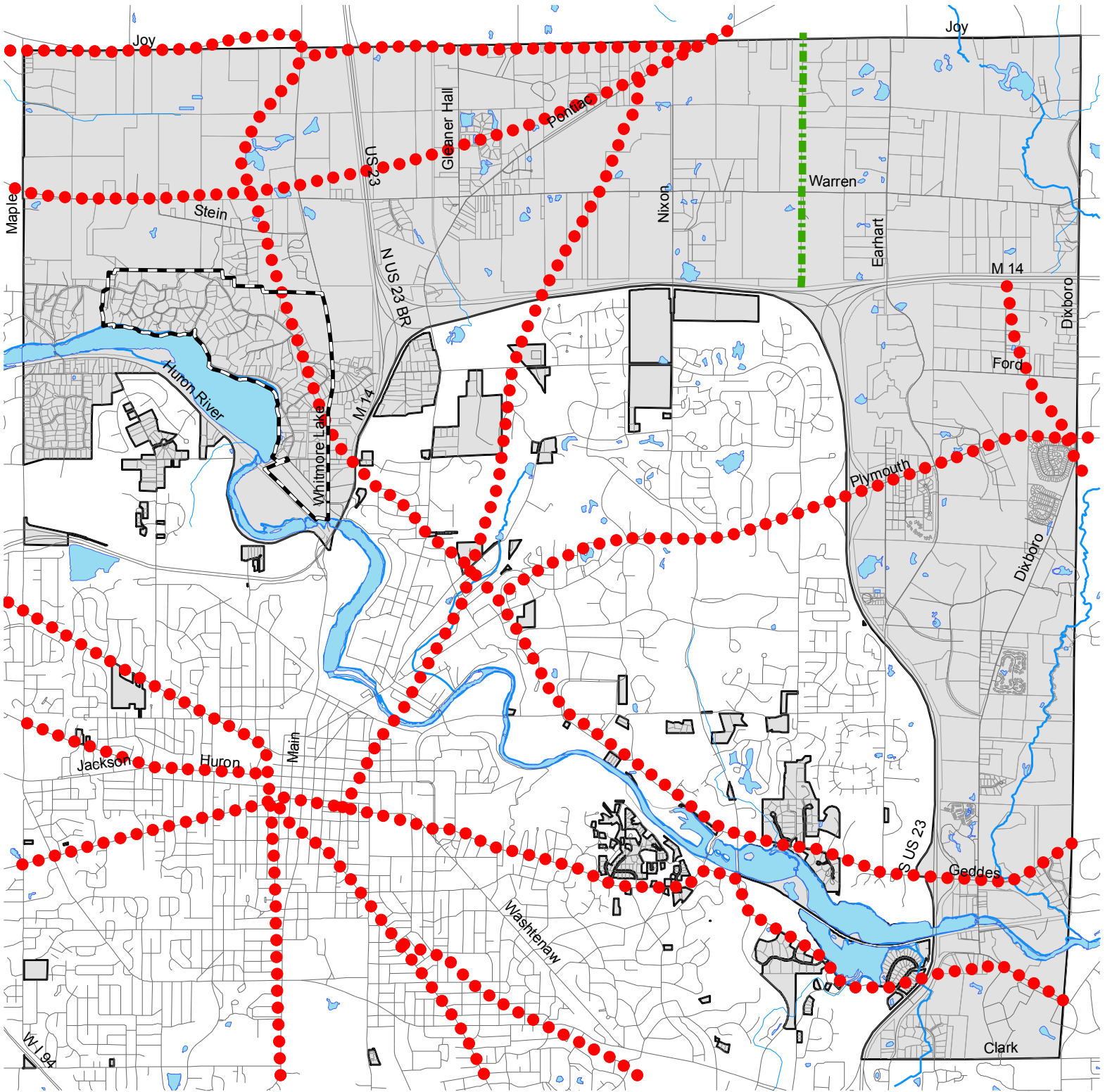
Map 1

PLANNING AREA

**Ann Arbor Township
Master Plan Update**



Plot Generation Date: 4/09/09
 Provided By: Carlisle/Wortman Assoc., Inc.
 Community Planners & Landscape Architects
 Base map Information: Ann Arbor Township and Washtenaw County



Legend

- Early Trails
- — — — Ann Arbor to Whitmore Lake Railway in Ann Arbor Township (approximate)
- ▭ Village of Barton Hills

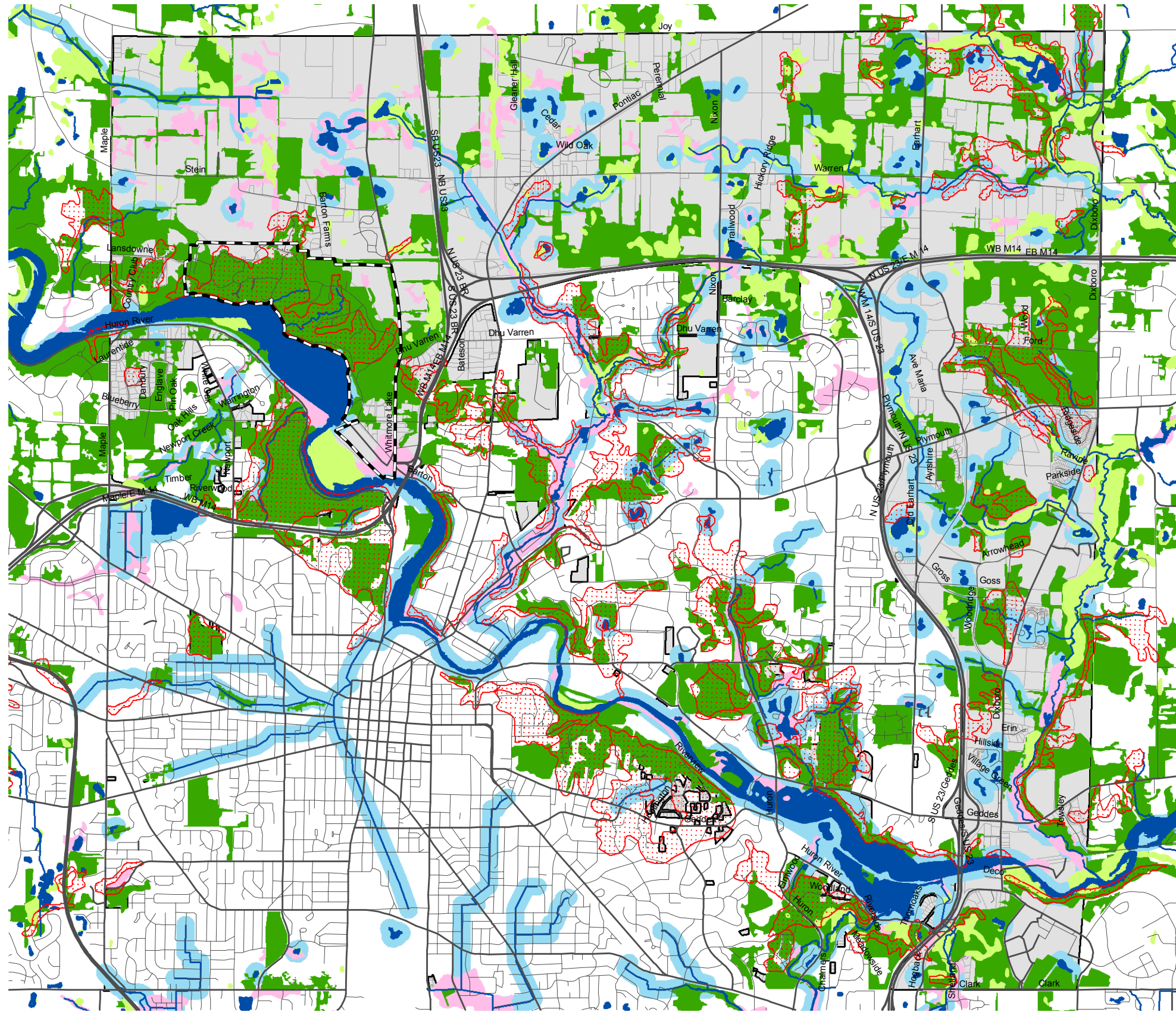
Map 2

EARLY TRAILS

**Ann Arbor Township
Master Plan Update**



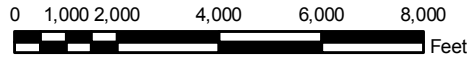
Plot Generation Date: 4/09/09
 Provided By: Carlisle/Wortman Assoc., Inc.
 Community Planners & Landscape Architects
 Base map information: Ann Arbor Township and Washtenaw County



- ### Legend
- Wetlands
 - Woodlands
 - Steep Slopes (>12%)
 - Hydric Soils
 - Riparian Corridor*
 - Lakes
 - Streams
 - Township
 - Village of Barton Hills

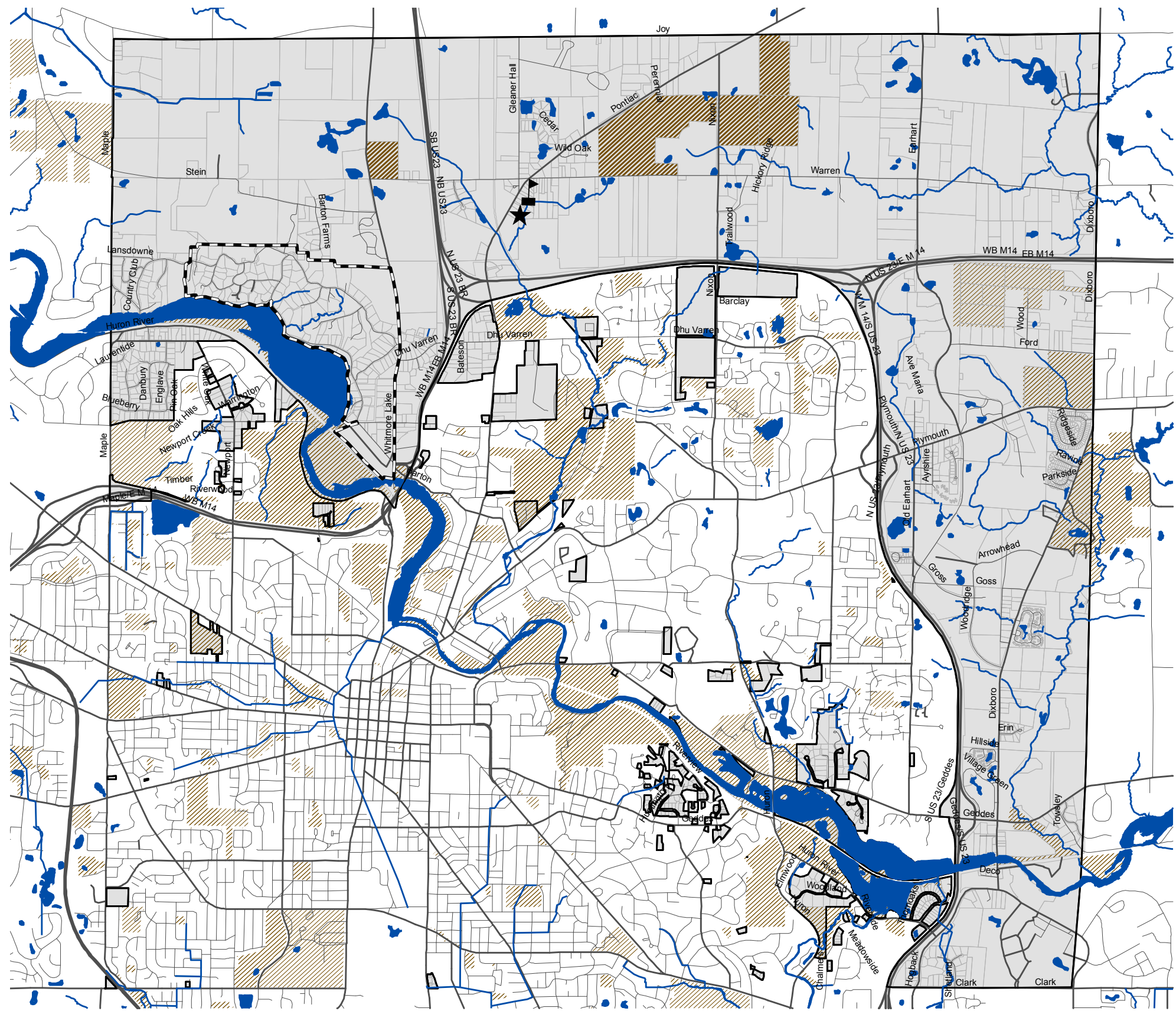
* Riparian corridors consist of a 300 foot buffer and floodplain boundary from surface waters.








Map 3 NATURAL FEATURES



Plot Generation Date: 4/09/09
 Provided By: Carlisle/Wortman Assoc., Inc.
 Community Planners & Landscape Architects
 Basemap Information: Ann Arbor Township and Washtenaw County

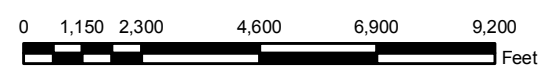
Ann Arbor Township
 Master Plan Update



- ### Legend
-  Protected Lands*
 -  Fire Station
 -  Township Hall
 -  Lakes
 -  Streams
 -  Township
 -  Village of Barton Hills

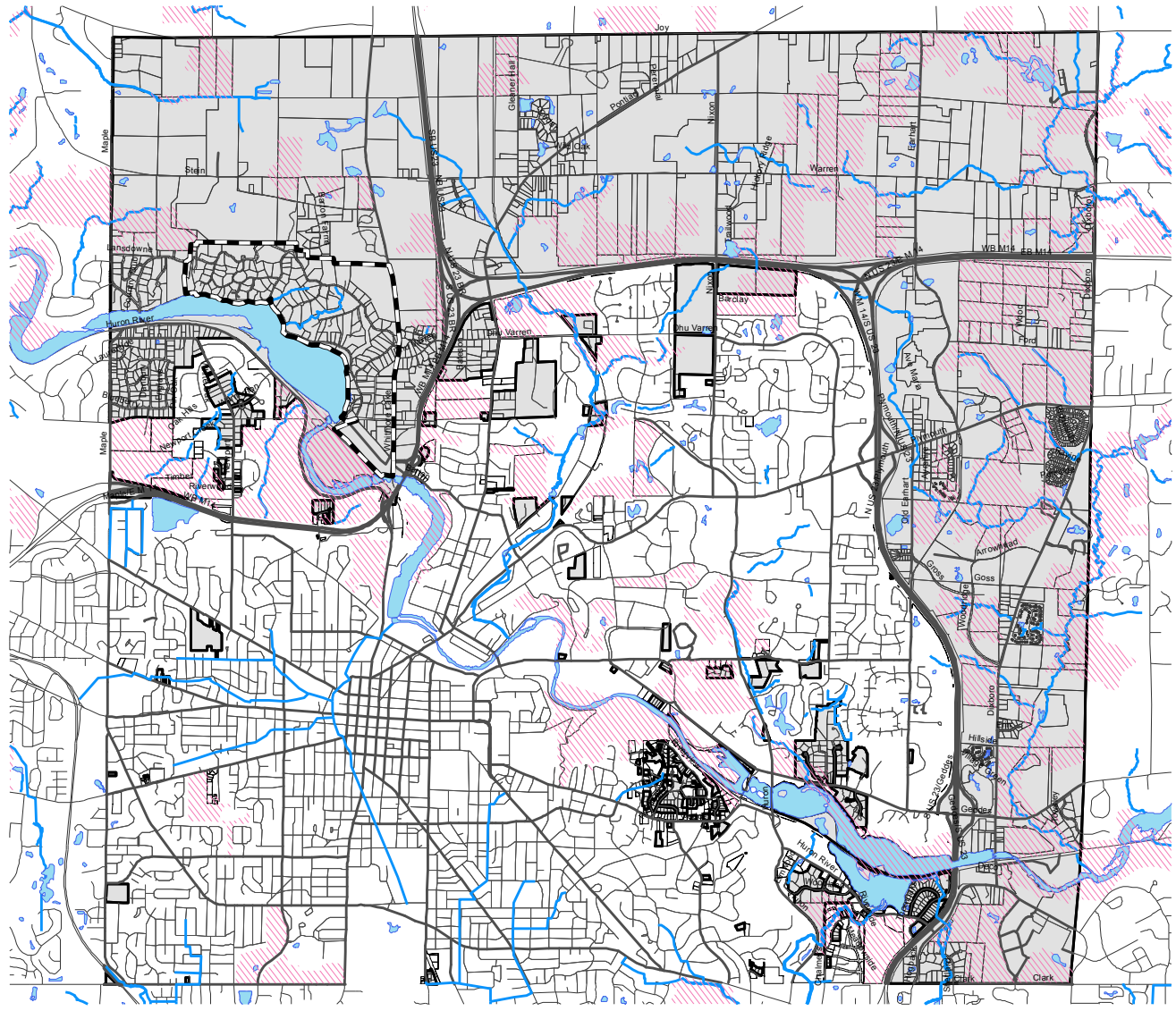
* Protected lands and greenways consist of County Parks, Local Parks, Washtenaw Land Trust, Washtenaw County Conservation and Recreational Lands, Public and Quasi-Public Lands, Township Conservation Easements, and properties protected by PDR programs.






Map 4 PROTECTED LANDS & PUBLIC FACILITIES



Plot Generation Date: 4/09/09
 Provided By: Carlisle/Wortman Assoc., Inc.
 Community Planners & Landscape Architects
 Basemap Information: Ann Arbor Township and Washtenaw County

Ann Arbor Township
 Master Plan Update



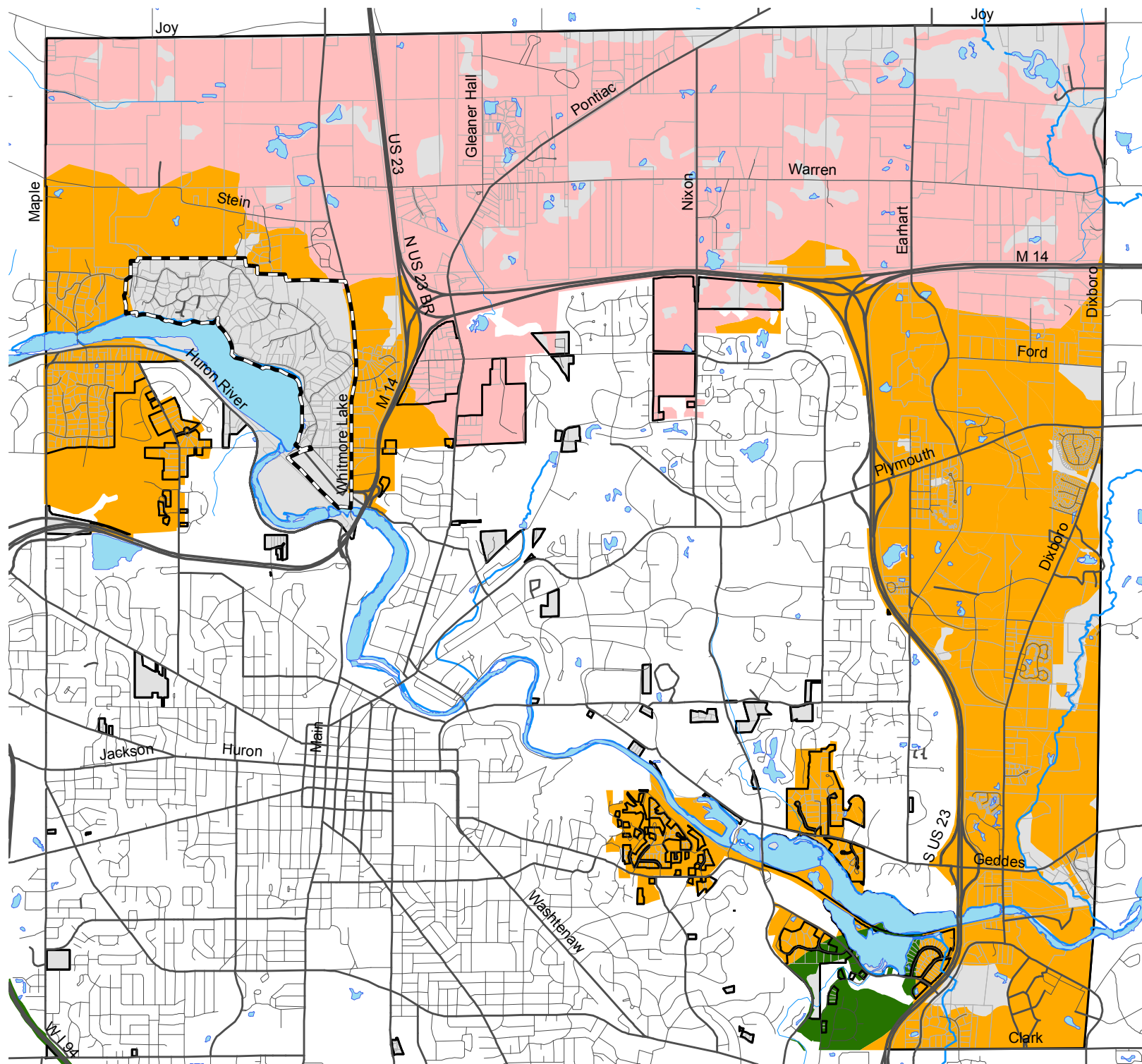
- Legend**
-  Bioreserves
 -  Lakes
 -  Streams
 -  Township
 -  Village of Barton Hills

Map 5

BIORESERVES

**Ann Arbor Township
Master Plan Update**

Plot Generation Date: 4/09/09
 Provided By: Carlisle/Wortman Assoc., Inc.
 Community Planners & Landscape Architects
 Basemap Information: Ann Arbor Township and Washtenaw County

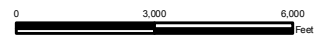


Legend

- 0 - 10% Imperviousness
- 10 - 25% Imperviousness
- 25 - 35% Imperviousness
- Over 35% Imperviousness
- Village of Barton Hills

Map 6
2000 IMPERVIOUS SURFACE%

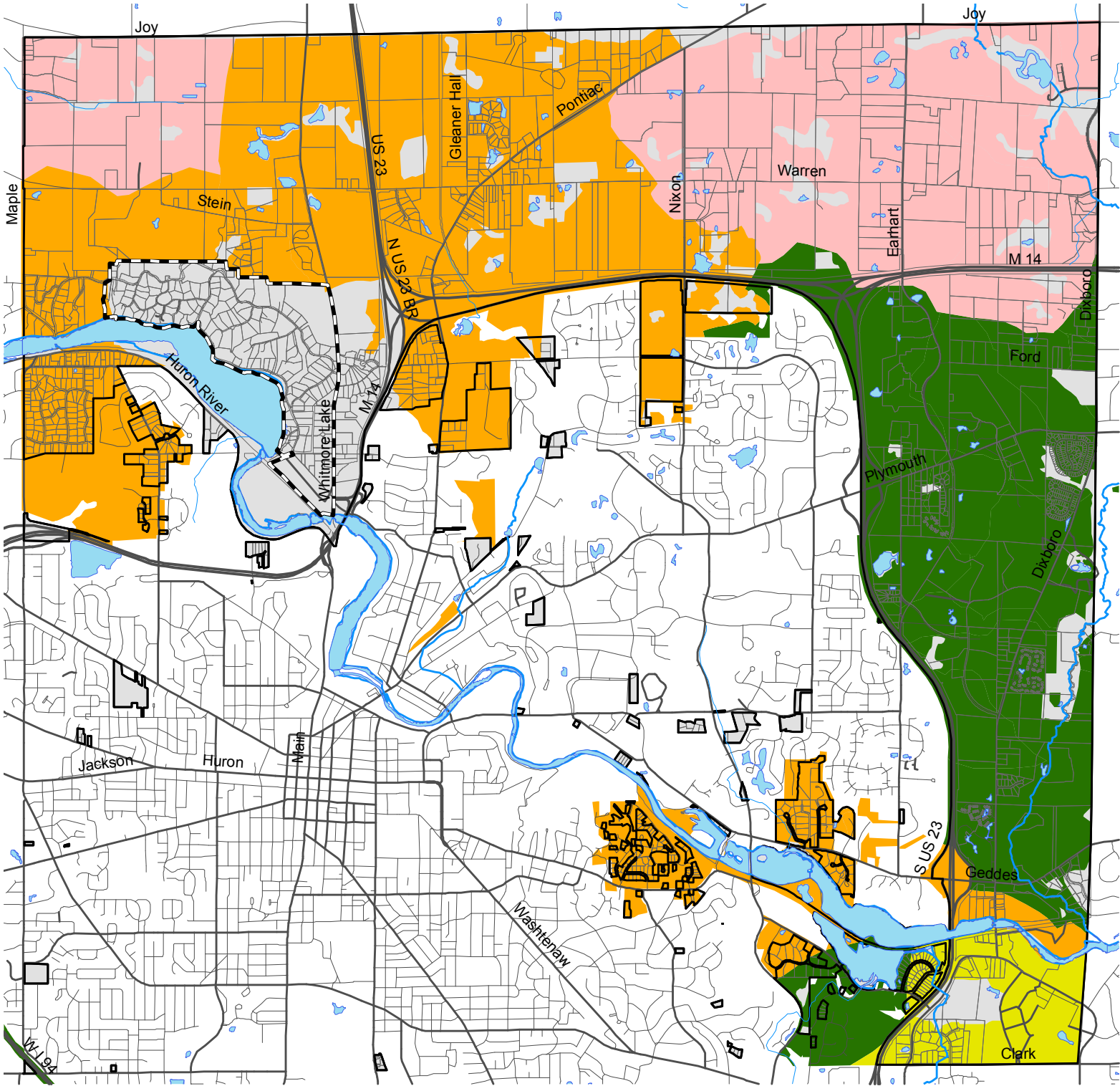
Ann Arbor Township
Master Plan Update



Plot Generation Date: 4/09/09

Provided By: Carlisle/Wortman Assoc., Inc.
 Community Planners & Landscape Architects

Basemap Information: Ann Arbor Township and Washtenaw County



Legend

- 0 - 10% Imperviousness
- 10 - 25% Imperviousness
- 25 - 35% Imperviousness
- Over 35% Imperviousness
- Village of Barton Hills

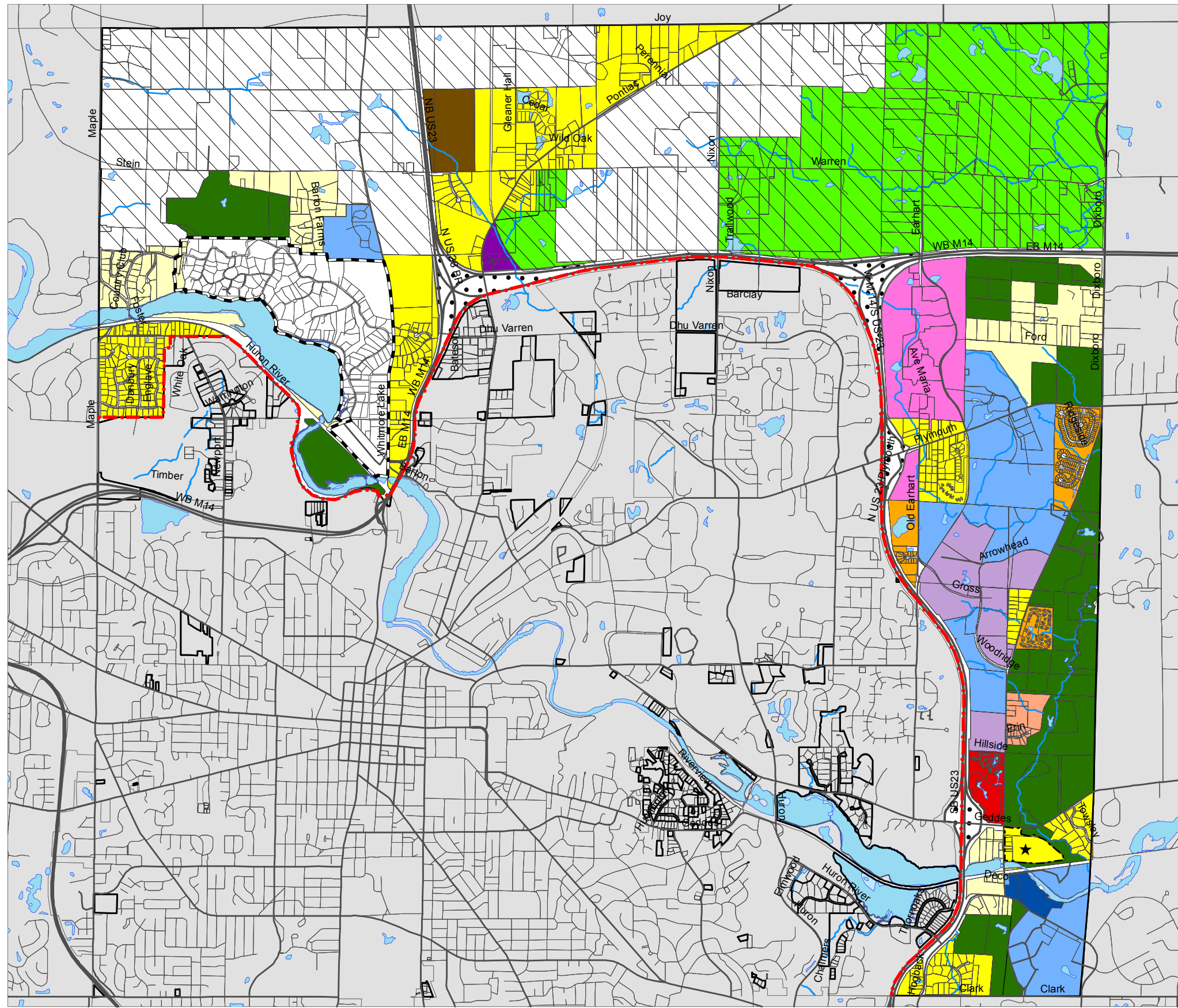
Map 7
FUTURE IMPERVIOUS SURFACE%

Ann Arbor Township
Master Plan Update



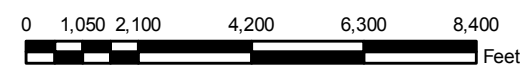
Plot Generation Date: 4/09/09
 Provided By: Carlisle/Wortman Assoc., Inc.
 Community Planners & Landscape Architects

Base map Information: Ann Arbor Township and Washtenaw County



Legend

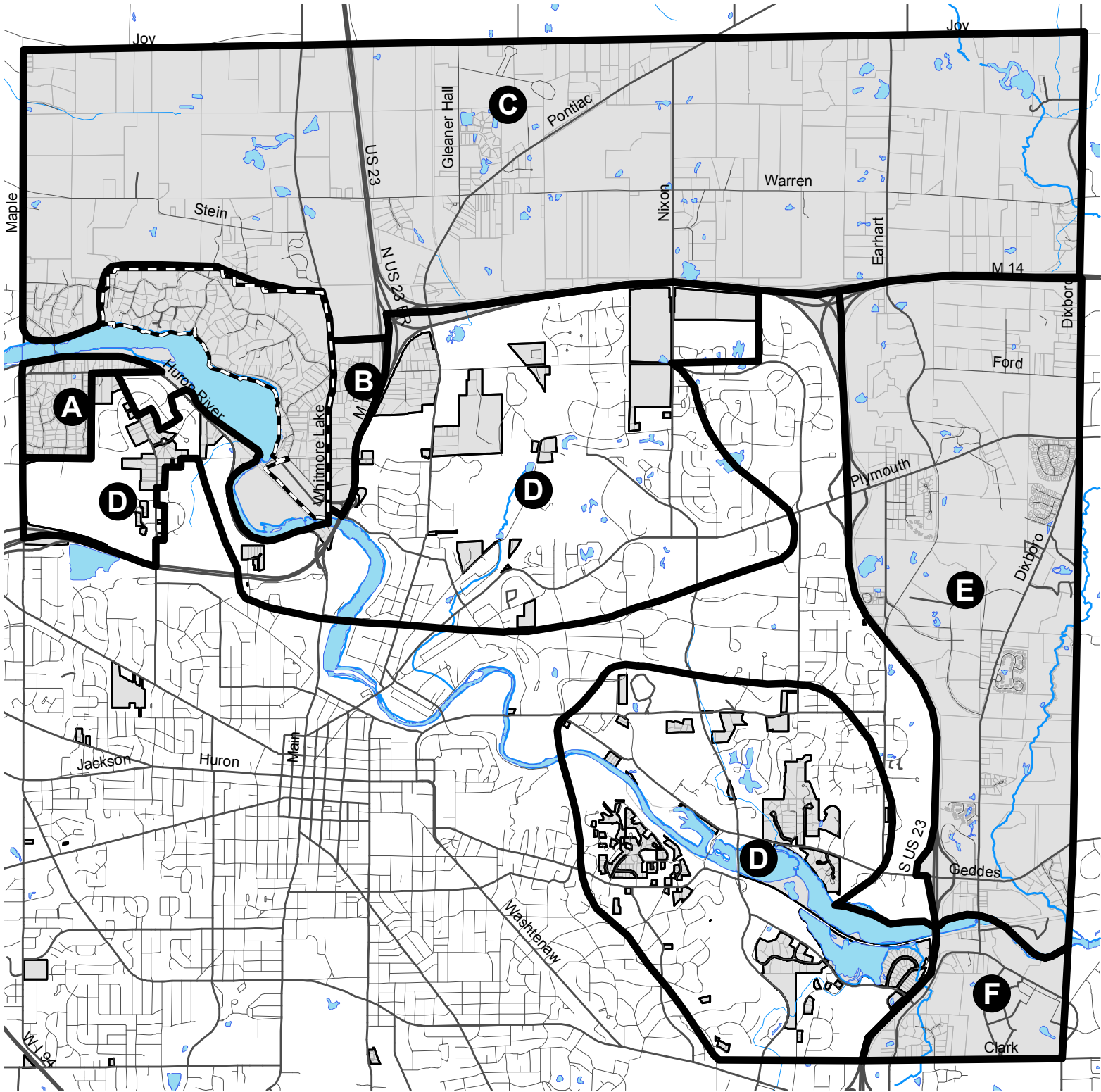
- Future Land Use Districts**
- Agricultural Production
 - Residential 0.2-0.5 D.U./acre
 - Residential 0.5-1.0 D.U./acre
 - Residential 1-2 D.U./acre
 - Residential 2-4 D.U./acre
 - Residential 4-6 D.U./acre
 - Residential 6 or more D.U./acre
 - Open Space Preservation
 - Recreation
 - Public Institutions
 - Senior Home
 - Office
 - Research
 - Industry
 - Annexation Policy Statement Boundary
 - Agricultural Preservation (Overlay)
 - Village of Barton Hills
 - Public Right of Way
 - ★ Ann Arbor Township also recognizes that this property may also be suitable for senior housing at a density of up to 9 units/acre.



Plot Generation Date: 4-09-09
 Provided By: Carlisle/Wortman Assoc., Inc.
 Community Planners & Landscape Architects
 Basemap Information: Ann Arbor Township and Washtenaw County


Map 8 FUTURE LAND USE

Ann Arbor Township
 Master Plan Update



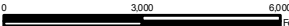
Map 9

Legend

 Village of Barton Hills

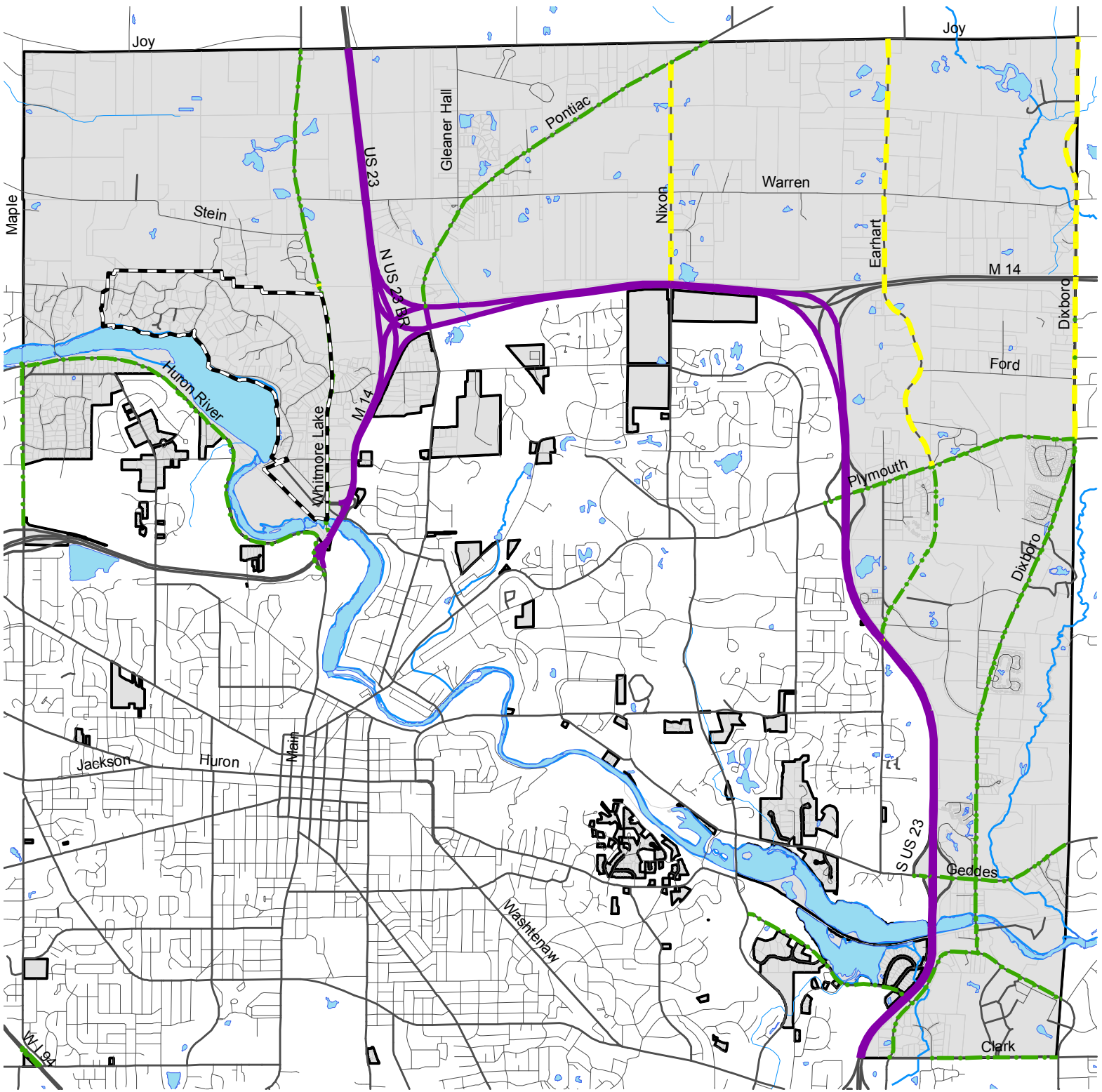
SPECIFIC AREAS MAP

**Ann Arbor Township
Master Plan Update**







Plot Generation Date: 4/09/09
 Provided By: Carlisle/Wortman Assoc., Inc.
 Community Planners & Landscape Architects

Base map Information: Ann Arbor Township and Washtenaw County



Legend

-  Collector
-  Minor Arterial
-  Freeway
-  Village of Barton Hills

Map 10

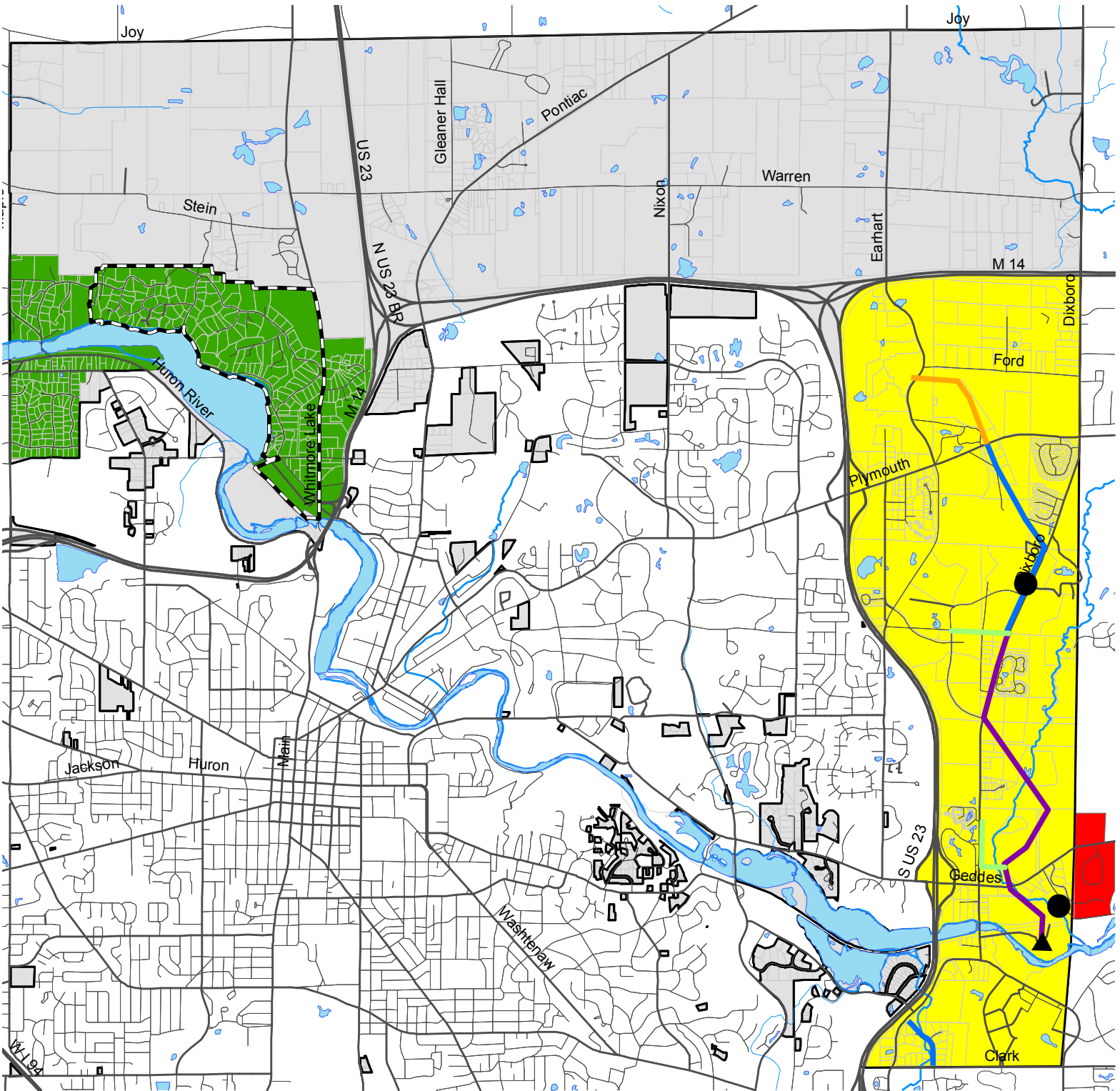
STREET PLAN

**Ann Arbor Township
Master Plan Update**



Plot Generation Date: 4/09/09
 Provided By: Carlisle/Wortman Assoc., Inc.
 Community Planners & Landscape Architects

Base map information: Ann Arbor Township and Washtenaw County



Legend

- Lift Station Area
- ▲ WWTP
- 10 Inch
- 12 Inch
- 15 Inch
- 18 Inch

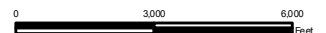
Service Areas

- 3-A
- 5-A
- 5-A (Superior Twp.)
- ▭ Village of Barton Hills

Map 11

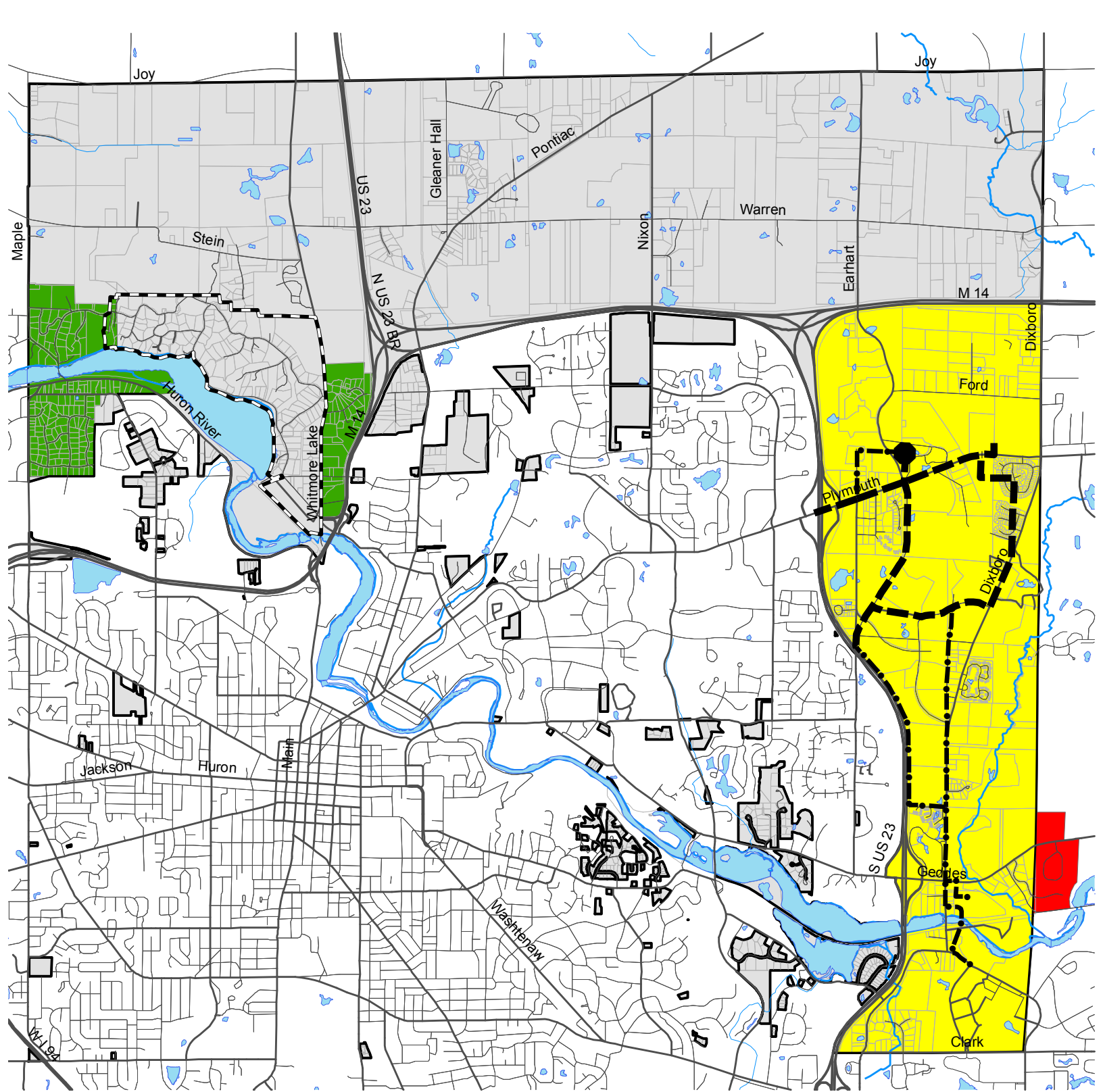
**SANITARY SEWER
SERVICE PLAN**

**Ann Arbor Township
Master Plan Update**






Plot Generation Date: 4/09/09
 Provided By: Carlisle/Wortman Assoc., Inc.
 Community Planners & Landscape Architects

Base map information: Ann Arbor Township and Washtenaw County






Map 12

Legend

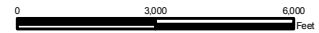
-  Pump Station / Storage Tank
-  12 Inch
-  16 Inch

Service Areas

-  3-A
-  5-A
-  5-A (Superior Twp.)
-  Village of Barton Hills

WATER SERVICE PLAN

Ann Arbor Township Master Plan Update



Plot Generation Date: 4/09/09
 Provided By: Carlisle/Wortman Assoc., Inc.
 Community Planners & Landscape Architects

Basemap Information: Ann Arbor Township and Washtenaw County